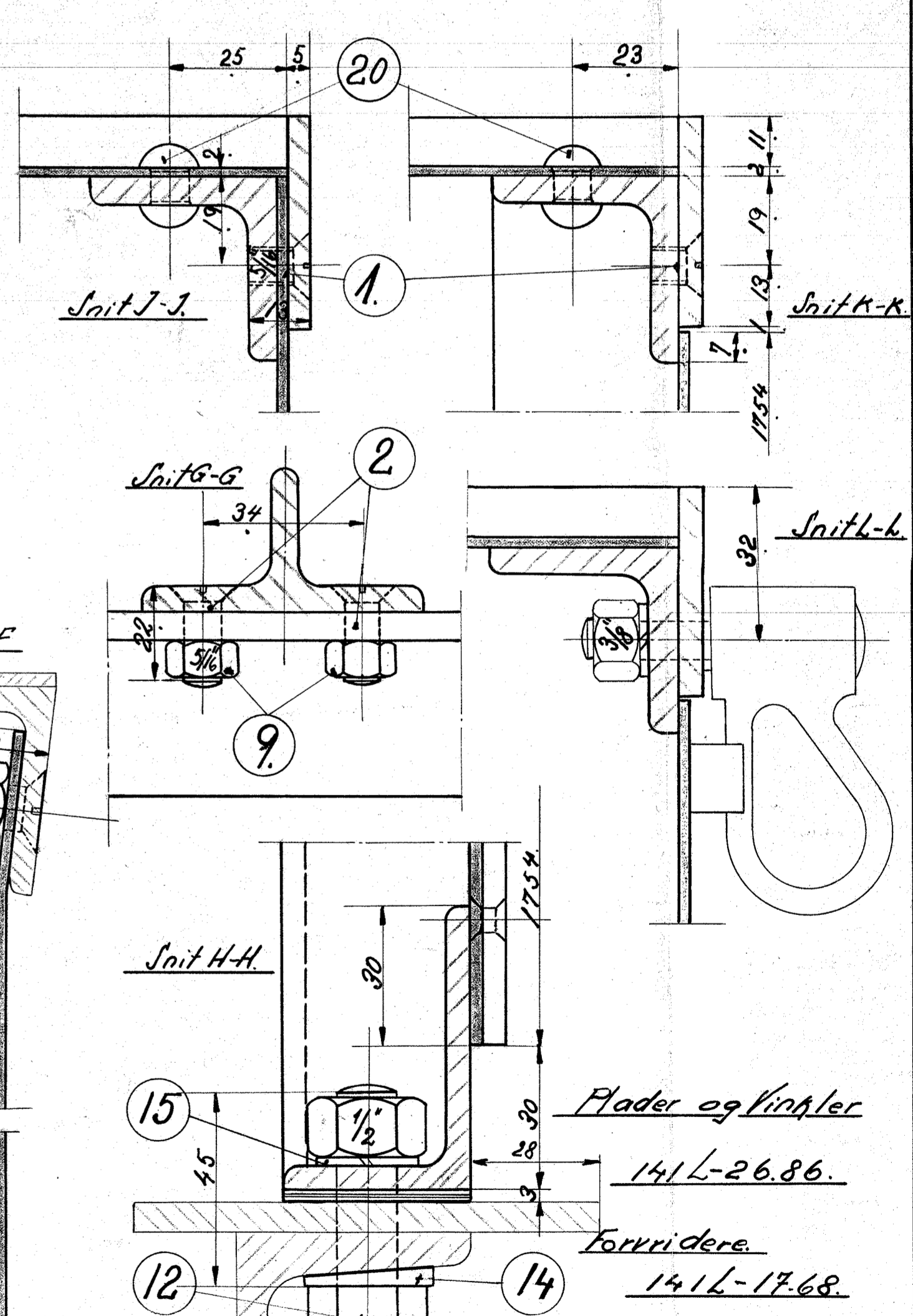


6/313

15	Skruer 5/16" x 15	1.	Flussj. Magasin
36	" " x 22	2.	" "
12	" 3/8" x 20	3.	" "
15	" " x 28	4.	" "
3	" " x 32	5.	" "
36	" 1/4" x 28	6.	" "
72	" " x 20	7.	" "
108	Møtrik 1/4" sort	8.	" "
36	" 5/8" "	9.	" "
30	" 3/8" "	10.	" "
4	sort Bolt 7/8" H. og Møtrik 5/8" x 20	11.	" "
7	" " " " " 1/2" x 45	12.	" "
20	" " " " " 3/8" x 25	13.	" "
7	skraa Skive 1/2"	14.	" "
7	Fjederskiver 1/2"	15.	" "
4	" " 3/8"	16.	" "
24	Hængsel 55x70x3	17.	Messing Købes
24	Mellem læg for do.	18.	Flussj. 70x25x750
72	Nagler 5" x 10	19.	Nittej. Magasin
90	" 8" x 19	20.	" "
25	" 8" x 17	21.	" "
55	" 6" x 12	22.	" "
1	Faconliste 1820 Lg.	23.	Egetræ Købes 1 1/2 x 2 1/2
2	Liste 40x55x1318x85 Lg.	24.	" " "
12	" 34x12x520 Lg.	25.	" " "
Div.	Træskruer	26.	Flussj. Magasin.



A/S FRICHS AARHUS		1:5	R.T.
		1:1	L.A.I.
			29-2-36
<i>Batteri- og Apparatfab.</i>			141L-2685
<i>Dirigør 1700 H. 17. J. 1906</i>			